



## Applications

# Crystallization

Monitor crystal size, shape, morphology & seed crystals to optimize yield and purity

### Crystal Size & Shape

### Agglomeration Detection

### Seed Slurry Concentration

### Fine Crystal Monitoring

## Process-Relevant Insights

Crystallization outcomes depend on subtle changes in size, shape, and crystal integrity. Our analysis helps you spot them early and act with confidence.

- + Optimize crystal growth to improve yield & throughput
- + Minimize uncontrolled secondary nucleation
- + Detect crystal breakage due to sub-optimal mixing
- + Reduce agglomeration impacting purity & processing
- + Tighter control of crystal size through seed analysis

## What You See - And What It Means

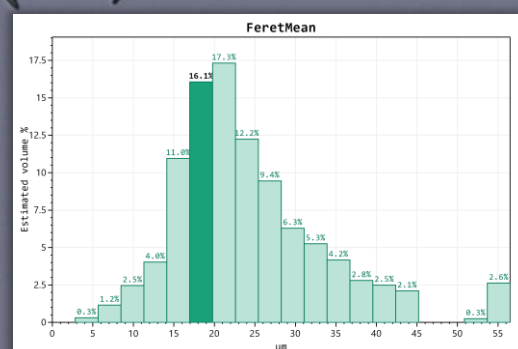
ParticleTech Analyzer helps you monitor crystal populations in real time - revealing size, shape, agglomeration, and unintended secondary nucleation so you can improve consistency and product quality.

## What You Gain

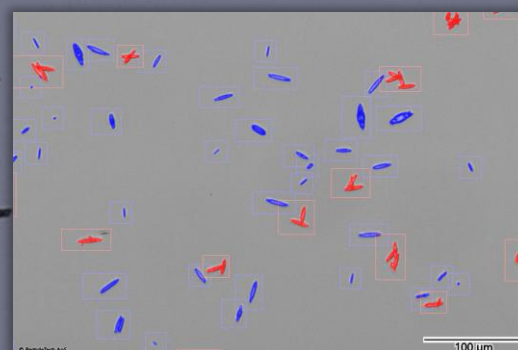
- ✓ Fast, reliable particle analysis in 2 minutes
- ✓ Optimize yield and purity through real-time insight
- ✓ Detect issues before they impact downstream
- ✓ Easy to use by both production and QC teams

## Read more at

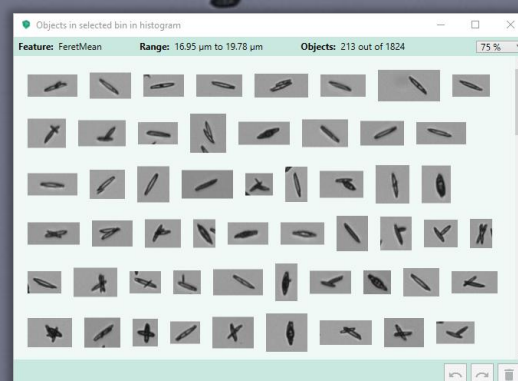
[particletech.dk/crystallization](https://particletech.dk/crystallization)



Crystal Size Distribution



Agglomerate detection



Interactive Results