



Applications

Encapsulation

Rapid analysis of capsule size, shell integrity, and encapsulation quality & concentration

Capsule Size Distribution

Encapsulation Efficiency

Shell Integrity

Morphology & Surface Texture

Process-Relevant Insights

Encapsulation performance depends on controlling a range of particle properties. Our analysis helps you quantify encapsulation quality & homogeneity.

- + Control capsule size for predictable release
- + Detect agglomerates that reduce dispersion quality
- + Measure encapsulation efficiency and stability
- + Quantify capsule concentration in mixed slurries

What You See - And What It Means

In just 2 minutes, the ParticleTech Analyzer reveals capsule size, concentration, and integrity — whether analyzing pure slurries or complex mixtures. These insights help you optimize both the encapsulation process and the formulation of the capsule material for better performance and stability.

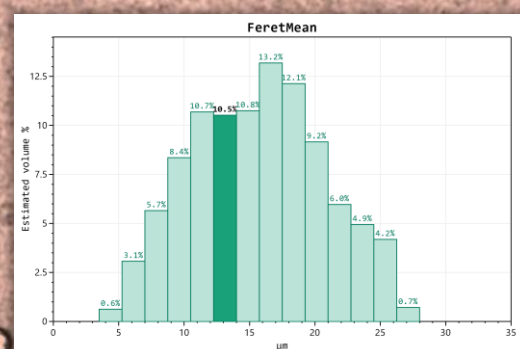
What You Gain

- ✓ Improved encapsulation efficiency & product quality
- ✓ Faster optimization of process & formulation
- ✓ Enhanced dispersion & controlled release
- ✓ Reliable, quick analysis - even in complex mixtures

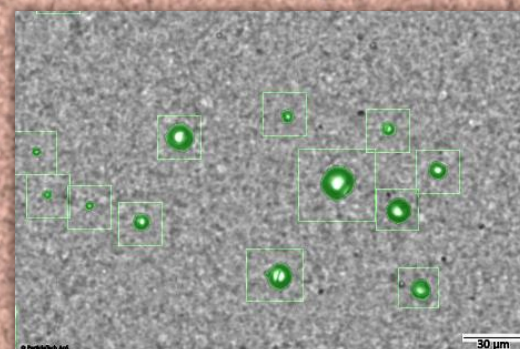
Read more at

particletech.dk/particletechanalyzer

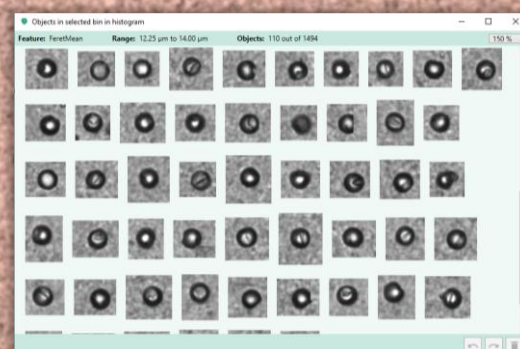
U.S. Patent No. 12,281,973



Capsule Size Distribution



Detect Capsules in Mixes



Quantify Capsule Quality